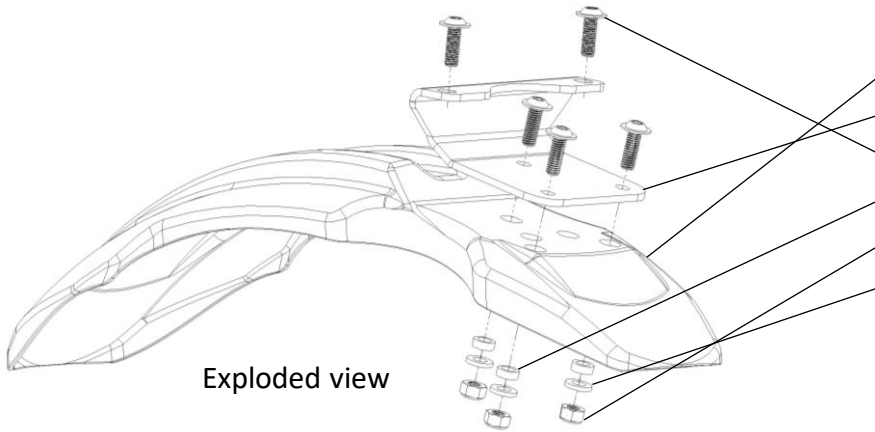


THROWBACK BIKES

ZX/Z-MIAMI Front Moto Fender Installation Guide

Version 1.3

THANKS FOR PURCHASING THIS FENDER! PLEASE READ ALL INSTRUCTIONS BEFORE INSTALLING. IF YOU HAVE TROUBLE DON'T HESITATE TO CONTACT US AT info@throwbackbikes.com



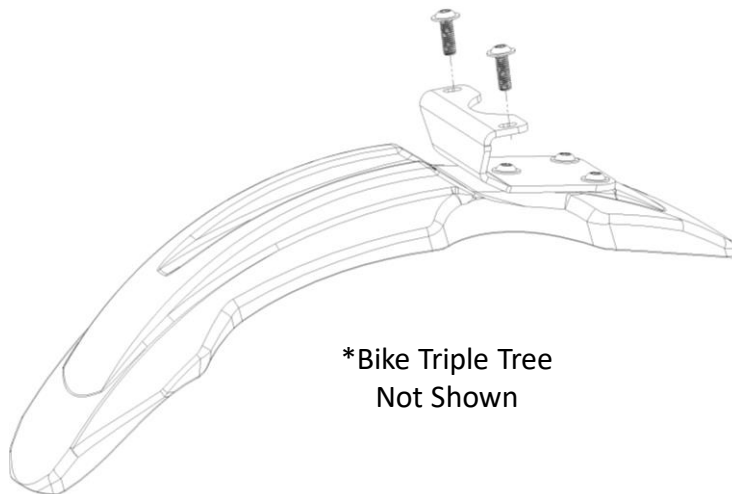
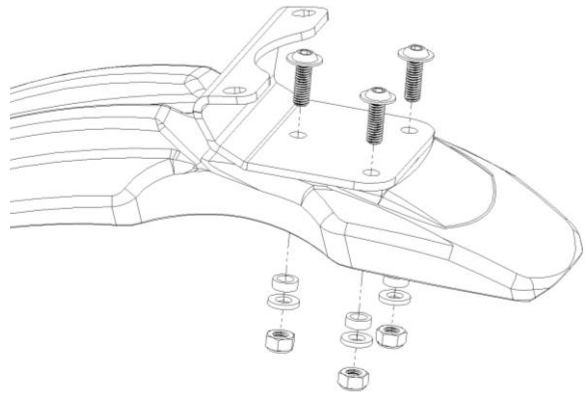
PARTS LIST

- 1 ABS FENDER
- 1 ALUMINUM BRACKET
- 5 M6 BOLTS
- 3 SMALL PLASTIC BUSHINGS
- 3 NYLOC NUTS
- 3 FLAT WASHERS

TOOLS REQUIRED

- 4MM HEX KEY (ALLEN)
- 10MM WRENCH OR SOCKET

STEP 1. Attach the fender to the bracket using 3 bolts from the top of the bracket. Use the plastic bushings, the washers, and the nuts from the bottom side. Make sure the fender is aligned well before tightening the three bolts. Make sure the bushings are staying in the oversized holes in the fender!



STEP 2. Slip the bracket over the lower triple tree on the bike. Start threading the remaining two bolts through the bracket and into the threaded holes in the triple tree. When both bolts are started straight, check the alignment of everything and then tighten them up!

That's it! We hope you love your new fender.